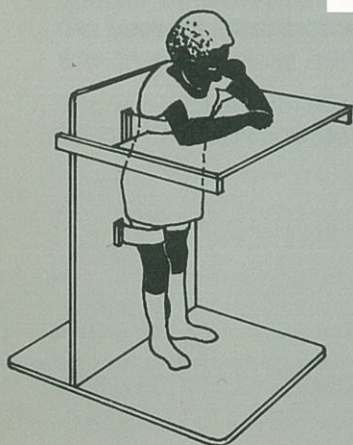


# DEMAND

Design & Manufacture for Disability



## ANNUAL REPORT 1986



# DEMAND

**Principal Patron**  
The Earl of Snowdon GCVO, RDI

**Patrons**  
The Viscount Ingleby  
The Baroness Lane-Fox OBE  
The Rt Hon. Alfred Morris MP  
Miss Esther Rantzen  
The Lord Renton PC, KBE, QC

**Management Committee**  
John Metcalfe, Chairman  
Bernard North, DFC, AFC Hon. Director  
Alec Chenery, Hon Deputy Director  
Andrew Cussins, Hon. Treasurer  
Brian Boothby, Research Director (LCF)  
Robert Sawyer, General Manager  
Eric Barnes, Workshop Manager  
Brian McKee, Project Manager

**Hon. Legal Adviser**  
Sir David Napley

**Hon. Medical Advisers**  
Dr Peter Mills, FRCP  
Dr Michael Swash, FRCP

**Hon. Industrial Adviser**  
Paul Lucas

## Design & Manufacture for Disability

Registered under the Charities Act 1960 No. 280618

99 Leman Street  
London E1 8EY

Telephone: 01-488 9869/9860

Dear Reader

This letter is addressed to all of you who are interested in DEMAND, whether our own workshop members, London College of Furniture staff, students, voluntary helpers, donors or beneficiaries.

Our tremendous achievements in 1986 were overshadowed by the untimely death from cancer at the age of 62 of our Chairman, The Lady Renton. Paddy, as she was known to her family and friends, was a founder and the first Chairman of DEMAND and an inspiration to all who worked with her. An appreciation with special reference to her work for DEMAND is on the page opposite this letter.

In other respects 1986 has been our most successful year to date. The impact of Robert Sawyer, as full-time General Manager, has been dramatic. The whole organisation has been pulled together on a thoroughly professional basis. Fundraising has been streamlined, the involvement of Government agencies increased and, most important, the end products multiplied with a rise in royalty income. This in turn has enhanced the contributions of our workshop and design staff. Of course it goes without saying that we continue to enjoy the closest co-operation and friendship at all levels within the London College of Furniture.

1987 promises to be year of further development. It will also see a change of address and an involvement in an interesting experiment affecting, initially, two charities combining to share some administrative resources, whilst retaining their separate identities. The Docklands Settlements is a mature charity, originally established to meet the needs of people living and working in the Docklands area. Today, especially in London, the picture has changed. The docks are being redeveloped, and the dockers, seafarers and their families are gone. The Settlements have a large community centre on the Isle of Dogs, which DEMAND will share. This will offer more space for our increasing workload, at a proportionate reduction in rental.

A month before she died, Paddy visited the Isle of Dogs site and expressed enthusiasm for the project. I am sure that her enthusiasm will prove to be abundantly justified.

Yours sincerely  
John Metcalfe



**Paddy Renton  
and DEMAND**

Paddy Renton, and her husband David, were involved in the problems of the disabled from early in their married life. Their youngest daughter was severely handicapped from birth, physically and mentally, and now lives at Ravenswood. David became Chairman of Mencap, of which he is now President. Together they visited Mencap branches all over the UK. They both became very much aware of the problems of the disabled.

At the end of 1978 Paddy heard that the London College of Furniture was engaged, unofficially, on a programme for the design and making of seating and postural support, amongst other aids for the disabled. At the invitation of Brian Boothby, Principal Lecturer in Design she visited the College to receive a chair that had been made for her daughter, and asked if there was anything she could do to help the programme. Alan Saunders and Bernard North, Principal and Vice-Principal of the College, told her of the existence of a fund established by a committee of staff under Sir Henry Peto, Chairman of the Governors, and of plans to extend the work and establish a unique post-graduate course to train designers and para-medics in the problems of designing aids for the disabled.

Paddy jumped at the opportunity of helping an innovative charity in the relief of the disabled and she made it very much her own baby. She referred to it later as her fourth child and she devoted all the drive, enthusiasm and dedication that a mother would to her youngest offspring.

With David's invaluable support and wise counsel, DEMAND (Design and Manufacture for the Disabled) was registered as a charity, in record time, at the end of 1980, with the twin objectives of promoting the design and making of equipment for disability, with associated research and funding bursaries to support students taking the London College of Furniture Postgraduate Diploma Course.

Dr. Max Caplin, one of DEMAND's Trustees, summed up Paddy's contribution in his tribute after her death: "Paddy became DEMAND's first Chairman in 1980. She had great skill as a fund raiser, but it was her inspired leadership, her engaging enthusiasm and her unswerving dedication to the welfare of disabled people which resulted in this remarkable development of DEMAND's work and influence."

After her death a special fund was inaugurated in her memory. This fund has now reached the £10,000 mark and it has been decided to devote the money to the production of "one-off" pieces of equipment for individuals, which was an aspect of our work dearest to her heart.

We, who worked with her in the workshop and the offices and in the college, have a great affection and respect for Paddy. This will continue to inspire us in the exciting years ahead.

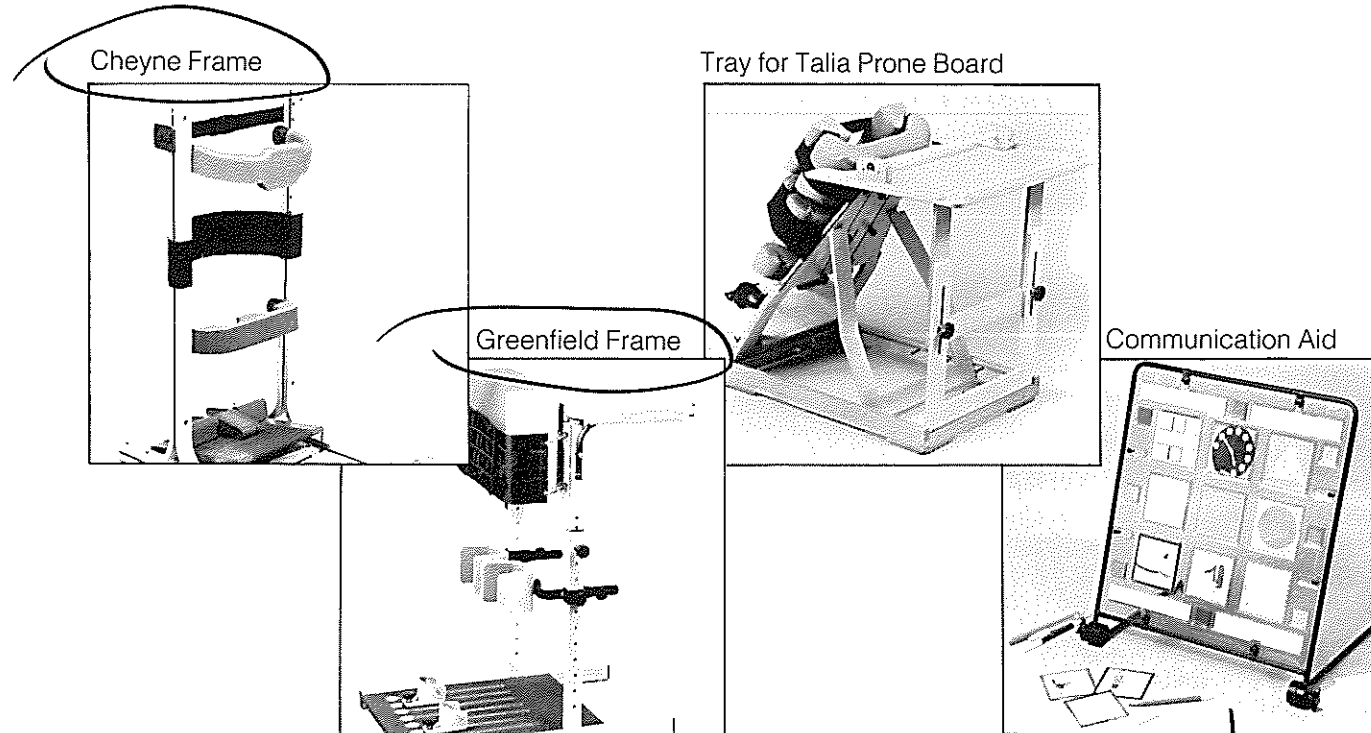


## Workshop & Studio

During 1986 time and resources have been devoted to eighteen projects, practical support has been given to an outstanding cohort of postgraduate students, and a proposal has been developed for the establishment of a seating clinic for the severely disabled.

We were most fortunate in being allowed by the MSC to retain the services of John Badcock and Frank Flanagan for a further year, and we are hoping to be able to retain Frank until at least 1988. Sadly, we said goodbye to David Gold in July, after three years of service, but have been fortunate in recruiting Maurice Shannon to strengthen both design and workshop. Maurice gained his first degree in Ulster, and an MA in furniture design in Glasgow. He has spent some time working as designer prototype maker with one of the leading furniture design and retailing groups in the UK.

Last year we set ourselves the target of putting a further five prototypes into production with outside manufacturers by the end of 1986. In fact we achieved three of our intended five, and an additional product, the development of a tray for the Talia Prone Board.



(These DEMAND designs are now available through Nottingham Rehab Ltd Tel 0602-234251)

A summary of our intended schedule and actual achievements appears below.

*Bubbles*

	1985	1986	1987	1988	1989	1990
Talia Prone Board	0					
Greenfield Standing Frame		0				
Domestic Wheelchair				x		
Adjustable Table		x (postponed, now 1987)				
Frame for Matrix Chair			x			
Seating for CVA Patients			x			
Richard Chair		x (in abeyance)				
Communication Aid		0				
Cheyne Standing Frame		0				
Sofabed for DF				x		
Child Measurement Aid				x		
Table for Prone Board		0				
Adult Prone Board				x		
Key Turner			x			

0 = in manufacture    x = intended manufacture

On the next two pages we have illustrated seven of the eighteen projects to which we have devoted time and resources, during 1986.

## Development of seating for CVA (Stroke) Patients.

1986 has seen the development of this project into something approaching its final form. Utilising data gathered with test-rigs at three London Hospitals, Diane Hobley designed and supervised the building of a first prototype.

This embodies the principles of a therapeutic system in a structure that whilst highly adjustable in every dimension is aimed a non-threatening appearance. Our manufacturers Camp Limited are now co-operating in the construction of a further and final batch of prototypes and the product will be launched in August 1987. We were all massively encouraged by the decision of the Wolfson Foundation in April, to fund the remaining two thirds of the expense involved in the project. Achieving successful manufacture in August will offer hospitals and nursing homes throughout the country the opportunity to seat patients consistently in a posture that promotes maximum recovery.

**Design: Diane Hobley    Made by: AB Hobley Ltd, & Eric Barnes**

**Funded by BP, Pilgrim Trust, Peter Minet, King Edwards Hospital Fund for London, Chest heart and Stroke Association and The Wolfson Foundation.**



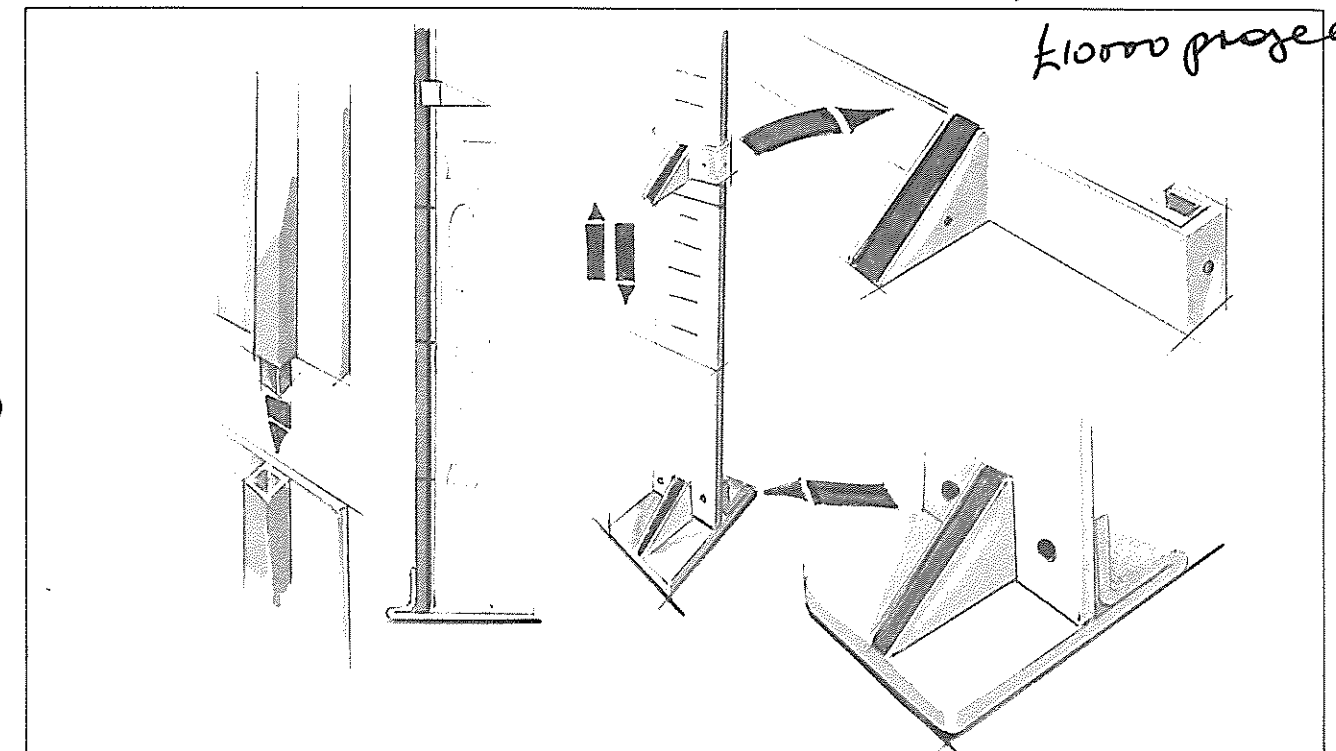
*Stroke Chair.*

## Child Measurement Aid

The Child Growth Foundation, has requested our assistance in designing, prototyping and manufacturing a portable, durable and highly accurate measuring device for use by nurses in schools. Accurate measurement of children on school entry and at regular intervals thereafter has not been obligatory since 1953, predominantly because of the lack of a suitable measuring device. Early detection of an abnormal pattern of growth offers the possibility of treatment that may offer the child a vital few inches of additional growth.

**Design: Sohaila Heidarian**

*First appearance in £10000 project.*

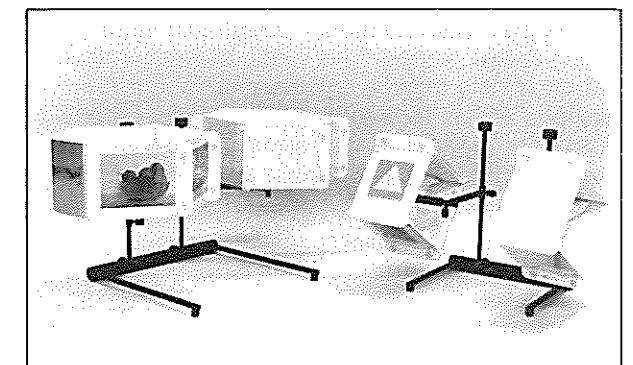


## Communication Toy

This is based on the development of an idea from Cheyne Centre in West Wickham. Cerebral palsied children have been using this device to acquire picture and symbol language whilst encouraging hand-eye co-ordination. The toy rotates on either a horizontal or vertical axis. Two four sided and two six sided toys have been made for testing. Further development is envisaged.

**Design: Sohaila Heidarian    Made by: Eric Barnes & Frank Flanagan**

**Funded by Marks & Spencers & British Telecom**



*X*

## Sofabed for DF

This is a specialised sofabed for a client suffering from multiple sclerosis. The project was completed in October, and discussions are in progress to determine the potential for manufacture. Conventional sofabeds are too low and too soft to provide adequate support. The DEMAND Sofabed is high and firm with a tubular stove enamelled metal frame. The conversion to a bed requires only the lightest touch and a range of movement within the abilities of many people with disabilities.

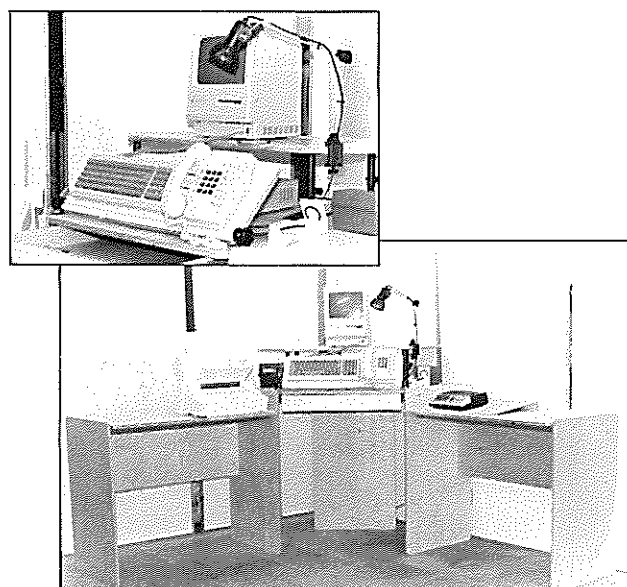
**Design: Maurice Shannon Made by: Maurice Shannon & Eric Barnes**



## Workstation for Dr B

Although "one-off," the route taken on this project, to provide a workstation for a quadriplegic doctor, incorporates simple principles of design and construction that will allow the workshop team to reproduce the system varying only the essential dimensions to meet the needs of other clients.

**Design: Maurice Shannon Made by: Maurice Shannon & Eric Barnes**  
**Funded by Special Trustees of the London Hospital**



## Chair for D

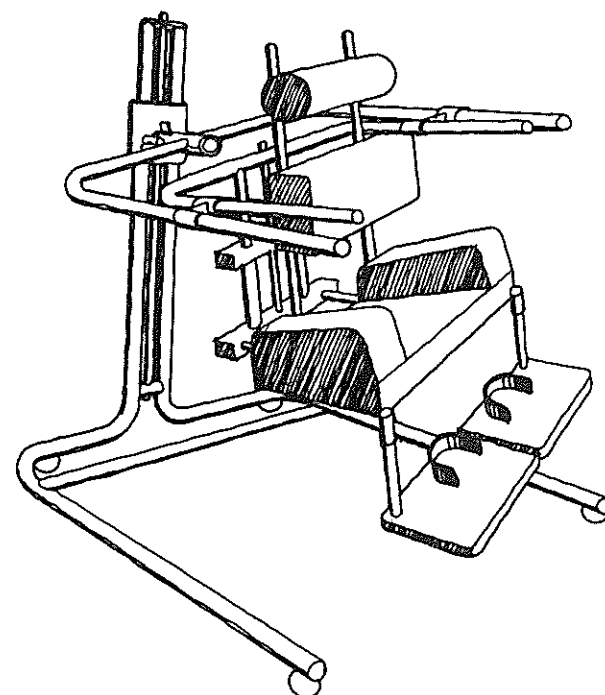
A special chair made for a young lady with cerebral palsy and severe scoliosis. The chair enabled the team to experiment successfully with shaped cushions and to develop a low cost reclinable frame.

**Design: Brian McKee Made by: workshop members**

## Feliz Exercise Chair

This unusual chair represents a test chair developed on the basis of an idea from Cheyne Centre in West Wickham. It enables a seat to swing about two axes gimbal fashion. It can be adjusted for size, weight and position of centre of gravity relative to pivots. The chair will give experience of movement to Downs Syndrome babies. This will test a hypothesis that the safe experience of a range of movement, can be offered by a piece of mobile equipment. Experience of postural movement is important to the achievement of the maximum range of postural control by the young handicapped. This piece of work is aimed at babies of nine months onwards.

**Design: Brian McKee & Eric Barnes Made by: Frank Flanagan & Jutta Tanner (CNA Student)**  
**Funded by Marks & Spencer and The Sir William Coxen Fund**



## Proposal to Establishing a Seating Clinic

This development can be seen as a logical 'next step' based on the experience in seating gained by workshop members over the last three years. We are seeking guidance from the experience of other seating clinics in the UK and USA. A fundamental part of the DEMAND philosophy is to combine function with the appearance of the product, and our own team is dominated by furniture designers for whom the overall feel of a prototype is an integral part of the project. Over the last few months a series of discussions have taken place with groups from ten treatment and research/service centres, as well as the Disabled Living Foundation. These consultations were aimed at establishing the broad areas of need which the DEMAND clinic will address. The service will focus on static seating, rather than seating for wheelchairs, as this is our area of particular expertise.

As a result of the discussions, experienced researcher/designers are to be commissioned to carry out immediate designs for rapid prototyping. The areas of greatest need for adaptive seating offering varying degrees of support are for: children under four years of age.

adolescents, 12-18 years of age.

adults, 19 years and upwards.

In addition to the above there is still a requirement for chairs for the most severe types of neurological problems, where significant deformity exists or is likely to develop. Such individuals require shell type chairs contoured to their unique needs.

By mid-1987 we aim to have completed first prototypes of each of the above, and by the end of the year to have provided seating for a number of clients on a trial basis. No outright sponsor has yet emerged for this very innovative venture and we would appreciate discussions with interested parties.

## Other Workshop Activities

1986 has also seen progress made on a number of other minor and major projects. Work has continued on the Domestic Wheelchair, (featured in last year's Annual Report). The brake is being modified, and discussions with manufacturers indicate the possibility of using the wooden curves and modular cushions for manufacture of domestic seating for the able bodied with a wheelchair option. This would substantially reduce the cost to the disabled user. Additional seat clamps to fit Canadian canoes have been designed and built for Brian McKee's canoe seats, and we are hoping to arrange for manufacture and distribution through a reputable supplier. We are currently engaged in the manufacture of a small batch of Adjustable Tables for a special school in the City, and aim to have this product in full manufacture by the end of 1987.

The workshop members have also completed number of redesigns and adaptations on projects ranging from the development of a reclining base for a chair that was built a year ago to making a horizontal leg support for an elderly patient with a broken leg. Work is progressing on a specialised reclining chair for a tall lady with a particularly unusual spinal problem. A walking aid trolley was built for domestic use for a frail lady in South London, and a headrest for another lady with degenerative changes in the cervical spine provide examples of typical "one-offs". A specially adapted Greenfield Standing Frame has been constructed and sent out to a client in South-West London. This is now in production through Nottingham Rehab, which means that this is the last of a very successful design that we shall have to build on a "one-off" basis.

DEMAND also made a small grant to enable an ex-CNAA course student, Rasoul Nobary, to build three tubular saddle chairs as additions to a commercial chair, the Joncare 'Trip-Trap'. These chairs have gone to young clients associated with the Bobath Centre in North-West London.

# DEMAND

# DEMAND

## Design of Equipment for Disability CNAA Postgraduate Diploma Course at the London College of Furniture

1986 was a particularly successful year for staff and students. Early in the year two members of the course, Helen Clark and Rasoul Nobary had designs accepted for 'NEW FOR OLD DESIGN' an exhibition of products to help older people which was held at the Boiler House, Victoria and Albert Museum.

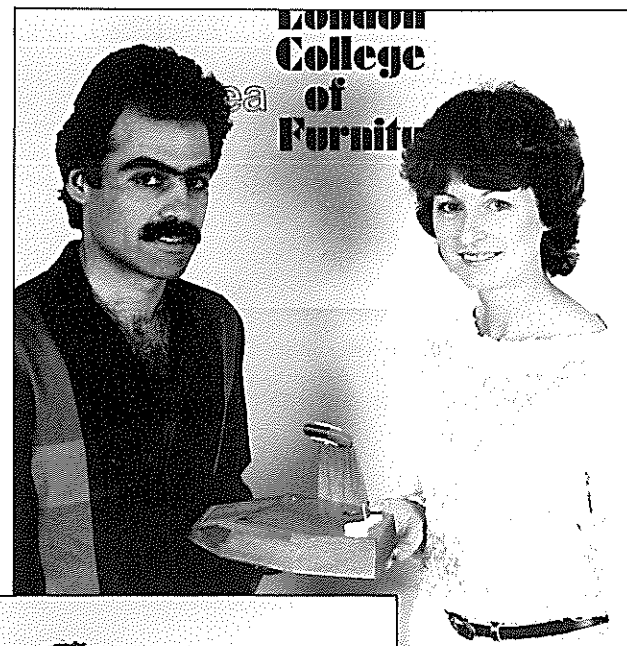
At this year's MELCHETT AWARD (for socially Aware Design) students from the course swept the board with 1st 2nd and 3rd prizes. This is a national competition open to practising professionals as well as students. The winners had their work displayed to the public at the Design Centre.

James Holmes-Siedle received first prize for an innovative bed heater particularly suitable for the elderly and the disabled.

Catherine O'Neill, who won 2nd prize, showed a range of play equipment to help speech therapists. Catherine who earlier won a travelling award from The Worshipful Company of Furniture Makers, has recently completed a study tour of North America and is writing a full report on the disability scene investigated there.

Rena Moore and Vivien Young won 3rd prize for their interlocking play mats with textured surfaces designed for therapeutic use with sight deficient babies. Rena and Vivien also won the coveted Royal Society of Arts DESIGN MEDIC AWARD for their research. This resulted in an invitation from Professor Heinz Wolf to develop the mats at the Biological Engineering Unit at Brunel University for production by Nottingham Rehab.

The course is now becoming very well known. The Course Director Brian Boothby and graduates, many of whom hold senior professional posts, are often invited to make presentations at universities and research centres concerned with disability. These successes have encouraged the College to prepare a part time mode of attendance for the course, which will commence in September 1987.



## Management Report

**Premises:** One of the important decisions taken in the Autumn of 1985 was to seek more spacious and more appropriate premises for DEMAND. Suitable sites needed to provide three or four times the area available in Leman Street. One of the problems facing DEMAND is the necessity of remaining in the central London area because of our strong links with the College and the acute needs of a large inner city population. Although many of our products and prototypes are distributed nationally our local links have established us as a source of assistance for many disabled Londoners.

Apart from the problem of finding a suitable physical environment in which to work, there are a number of other difficulties that it was felt a move might resolve:

- \*Containing any consequent rise in the managerial and administrative overhead.
- \*Achieving temporal security, at low cost, without committing funds to freehold premises.
- \*Access to skilled consultancy advice.

During 1986 discussions have been taking place between DEMAND, the London Docklands Development Corporation and The Docklands Settlements, the latter being a long established charity with a number of sites in the docklands area. Initial discussions, centred on the sharing of premises, have expanded to include participation in a federation of voluntary groups concerned with the disadvantaged and disabled. An outline agreement between the two organisations provides for the sharing of some management services.

**Management Team:** As a consequence of the need to streamline the DEMAND management to allow rapid decision making and frequent reporting by workshop members, a major reorganisation of the committee structure took place in June.

**Communications:** It is now important to increase our range of contacts, particularly within the para-medical professions who are the indirect source of the bulk of our requests.

This is an area in which our efforts are beginning to bear fruit. During the year DEMAND has appeared in a number of medical and para-medical publications and in the London papers. (Brian McKee appeared on ITN's Thames News programme with the Domestic Wheelchair.) Attending the Spastic Society conference in Cambridge, allowed two workshop members to meet with a number of rehabilitation engineers and other groups with similar concerns to DEMAND. It has also been agreed that new feature coverage should be sought on each project as it is completed, and there are some fifteen publications that will be carrying news items over the next two or three months.

### Staff Associates at 31st December 1986

Robert Sawyer, General Manager  
 Brian McKee, Project Manager  
 Eric Barnes, Workshop Manager  
 Sohaila Heidarian, Designer  
 Diane Hobley, Designer  
 Maurice Shannon, Designer/Craftsman  
 John Badcock, Craftsman (MSC)  
 Frank Flanagan, Craftsman (MSC)  
 Joan Carr, Finance Officer  
 Ann Hooper, Secretary  
 Julie Blaney, Admin Clerk (MSC)  
 Simon Wilkinson, Driver Handyman (MSC)



# DEMAND

## Design and Manufacture for Disability

### Income and Expenditure Account

for the year ended 31 December 1986

	1986	1985
	£	£
<b>INCOME</b>		
Donations	104,539	79,360
Manpower Services Commission	15,818	7,385
DHSS Grant	10,000	—
Fund raising events	1,247	388
Untaxed interest	10,795	11,999
Taxed interest	75	74
Royalties	3,270	505
Income tax recoverable	1,302	424
	<u>147,046</u>	<u>100,136</u>
<b>Paddy Renton Fund:</b>		
Donations and covenants	9,350	—
Income tax recoverable	659	—
Per Balance Sheet	<u>10,009</u>	<u>—</u>
<b>EXPENDITURE</b>		
<b>Scholarships</b>		
Fees	15,187	8,097
Subsistence allowance	3,743	3,637
	<u>18,930</u>	<u>11,734</u>
Staff costs	61,029	44,550
Consultancy fees	—	15,000
Manpower Services Community Project	15,348	7,291
Prototypes and materials	2,010	4,625
Fund raising expenses	1,194	—
Research expenses	1,513	4,353
Workshop expenses	20,863	12,323
Administration expenses	4,926	3,841
Audit fee	460	—
Irene Mould Prize Award	100	100
Depreciation	5,123	12,478
	<u>131,496</u>	<u>116,295</u>
<b>EXCESS INCOME (EXPENDITURE)</b>	<u>15,550</u>	<u>(16,159)</u>
Allocated to — Workshop Capital Fund	15,000	—
— General Fund	550	(16,159)
	<u>15,500</u>	<u>(16,159)</u>

**Note:** The fixed assets are being written off over their expected useful lives at the following rates:  
 Leasehold property Over the period of the lease  
 Tools and equipment At 10% per annum on cost  
 Motor vehicle At 20% per annum on cost

### Notes: Income and Expenditure Account

**DHSS Grant** — Is a section 64 grant to support the central office costs of organisations during a critical period of expansion.

**Royalties** — Represents the proceeds of the manufacture and marketing of the Talia Prone Board by Nottingham Rehab Ltd.

**Staff Costs** — The rise reflects the impact of the expansion programme that is taking place, and this trend will continue in 1987 and 1988.

**Prototypes and materials, Research expenses & Workshop expenses** — Taken as a group design and production expenditure has risen by some £3085 in 1986. The wider variations in the individual totals reflect a change in bookkeeping to allow an effective review of expenditure by project.

**Administration expenses** — The rise reflects the service agreements for the three Apple computers, supporting hardware, and increase in cost of maintaining the vehicle.

**Depreciation** — Reduced as no leasehold asset depreciated in 1986.

# DEMAND

## Design and Manufacture for Disability

### Balance Sheet

31 December 1986

	1986	1985
	£	£
<b>FIXED ASSETS (Net of depreciation)</b>		
Leasehold property	—	—
Tools and equipment	25,429	20,129
Motor vehicles	3,357	5,036
	<u>28,786</u>	<u>25,165</u>
<b>QUOTED INVESTMENT — At cost</b>	1,004	1,004
<b>CURRENT ASSETS</b>		
Debtors and prepayments	4,044	3,246
Cash and bank balances	150,154	120,434
	<u>154,198</u>	<u>123,680</u>
<b>CURRENT LIABILITIES</b>		
Advance receipts	—	3,000
Creditors	18,277	6,698
	<u>18,299</u>	<u>9,698</u>
	<u>135,921</u>	<u>113,982</u>
	<u>165,711</u>	<u>140,151</u>
Represented by:		
<b>GENERAL FUND</b>		
Balance brought forward	140,152	156,310
Excess income (expenditure) for the year	550	(16,159)
	<u>140,702</u>	<u>140,151</u>
<b>WORKSHOP CAPITAL FUND</b>	15,000	—
<b>PADDY RENTON FUND</b>	10,009	—
	<u>165,711</u>	<u>140,151</u>

HON TREASURER/TRUSTEE  
A. Cussins

*Andrew T. Cussins*

### REPORT OF THE AUDITORS TO THE TRUSTEES OF DEMAND

We have examined the annexed balance sheet and income and expenditure account which have been prepared under the historical cost convention. In our opinion, the accounts give a true and fair view of the state of affairs of Demand at 31 December 1986 and of the income and expenditure for the year ended on that date.

33 St James's Street, London SW1A 1HX 25 February 1987 HERBERT PEPPER & RUDLAND Chartered Accountants

### Notes: Balance Sheet

**Leasehold Property** — There is no figure shown here. The previous lease expired during 1986, and an agreement for a new lease has only just been completed (Jan '87)

**Creditors** — This sum represents the sum due in back rent on completion of the lease, and student fees due for payment in 1986 but not invoiced until January 1987.

**General Fund** — Represents a working capital reserve allowing commencement of projects in advance of suitable sponsors being found.

**Workshop Capital Fund** — The programme of expansion requires additional machinery for design and manufacturing purposes. Some fifteen thousand pounds was collected for this purpose during 1986. A further twenty thousand pounds will be needed during the next eighteen months.

# DEMAND Principal Donors in 1986

Anonymous  
British Telecom  
BUPA  
Chest Heart and Stroke Ass  
Cooper Charitable Trust  
Sir William Coxen Trust Fund  
D.H.S.S.  
Esmee Fairbairn Charitable Trust  
The Gatsby Charitable Trust

The Worshipful Company of Goldsmiths  
King Edwards Hospital Fund for London  
The Mercers Company  
The Ministering Childrens League  
The Peacock Trust  
Sir Samuel Scott of Yews Trust  
Harold Smith Charitable Trust  
The Tudor Trust  
The Wolfson Foundation

## The Following Individuals and Organisations Contributed to DEMAND in 1986

Anonymous  
Babcock International plc  
Barclays Bank plc  
Lord Barnby's Foundation  
Bass Charitable Trust  
The Benham Charitable Settlement  
B.E.T. plc  
Sydney Black Charitable Trust  
Blue Circle Industries plc  
British Gas Corporation  
British Sugar plc  
British Tissues Ltd  
Brixton Estate Charitable Trust  
Cazenove & Co  
The Joseph Collier Charitable Trust  
The Lady Colquhoun  
Cripplegate Foundation  
Miss M.E. Evans  
Douglas Heath Eves Charitable Trust  
C.S. French Charitable Trust  
Garrard, The Crown Jewellers  
The Gibbins Trust  
The Gilchrist Educational Trust  
The Grocers Trust Company  
Hammersmith Society of Friends  
Mrs G. Hartwig  
Hoover Trust Fund  
Imperial Group plc  
Jephcott Charitable Trust  
Kleinwort Benson Limited  
Ladbroke Group plc  
Beatrice Laing Trust  
David Laing Foundation  
Bryan Lancasters Trust

James Latham plc  
London Law Trust  
Edgar E. Lawley Foundation  
Mr & Mrs W.R. Lee  
Sir Edwards Lewis Foundation  
Lloyds Bank plc  
Lloyds and Lloyds Brokers  
Macfarlanes  
Miss Marsh Charitable Trust  
MEPC plc  
The members of  
Middlesex County Rugby Football Union  
Midland Bank plc  
Rt Hon Lord Molson PC  
F.V. Mould Esq  
National Westminster Bank PLC  
Nestlé Charitable Trust  
Paraig O'Brien  
P.F. Charitable Trust  
Pilot Club  
Pyke Charity Trust  
Rayne Foundation  
Reed International  
Lois West Russell Charitable Trust  
Sacred heart Junior School  
Standard Chartered Bank plc  
Shell UK Limited  
Freddie Smith Trust  
W.H. Smith & Son Ltd  
Sternberg Charitable Fund  
The Thomson Organisation  
Unilever plc  
The Worshipful Company of Vintners  
Borg-Warner Ltd

## Principal donors to the Paddy Renton Fund in 1986

Anonymous  
Abbots Ripton and Woodwalton Church Account  
Abbots Ripton Parish Council  
Parish Church of All Saints Huntingdon  
R.T. Cole  
Andrew Cussins  
Sir Patrick and Lady Hamilton  
Hungtingdonson Conservative Club  
The Viscount Ingleby  
Paraig O'Brien

The Hon Mrs Caroline Parr  
The Peacock Trust  
Nancy Powell  
Ann Rehan  
The Lord Renton  
Mr and the Hon Mrs Tim Scott  
Helene Serba Charitable Trust  
Mrs I Smallwood  
The Freddie Smith Trust  
The Earl of Verulam